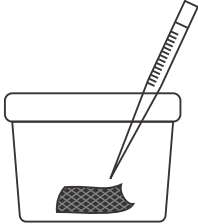


JIS L 1902

1 Inoculation of Bacteria (Staphylococcus Aureus and/ or Klebsiella Pneumoniae) on Untreated (UT) and Treated (T) Fabric 0.4 gm (18 mm x 18mm)



2 Incubation

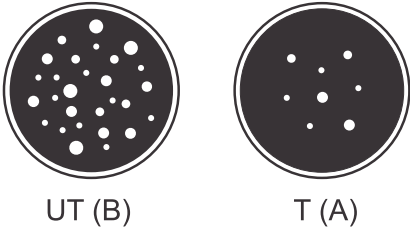
37° for 24 hours



3 Neutralization



4 Recovery of Bacteria



5 Antimicrobial Activity (A) = F (logC1-LogC0)-G(logT1-LogT0)

Antibacterial Efficacy:

Antibacterial Value A	Antibacterial Efficacy
$2.0 \leq A < 3.0$	Effect
$A \geq 3.0$	Full effect