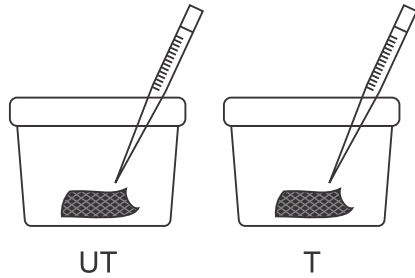


# ASTM 2149

- 1 Sample Preparation  
1gm Fabric

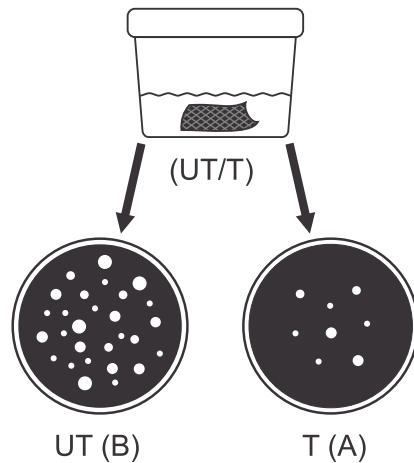


- 2 Inoculation of Fabric

- 3 Incubation 35° for 24 hours on Wrist arm shaker (UT/T)



- 4 Recovery of Bacteria



- 5 Percentage Reduction of Bacteria

$$= \frac{B - A}{B} \times 100$$