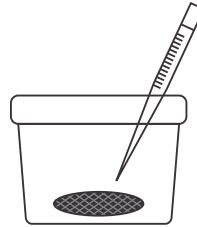


AATCC 100

- 1 Inoculation of Bacteria
(Staphylococcus Aureus
and / or Klebsiella Pneumoniae)
on Untreated (UT) and
Treated (T) Fabric 1 gm

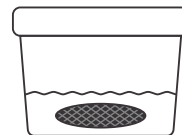


- 2 Incubation

37° for
24 hours

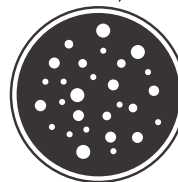


- 3 Neutralization

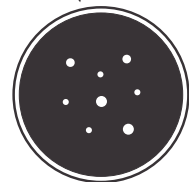


(UT/T)

- 4 Recovery of Bacteria



UT (B)



T (A)

- 5 Percentage Reduction
of Bacteria

$$= \frac{B - A}{B} \times 100$$